



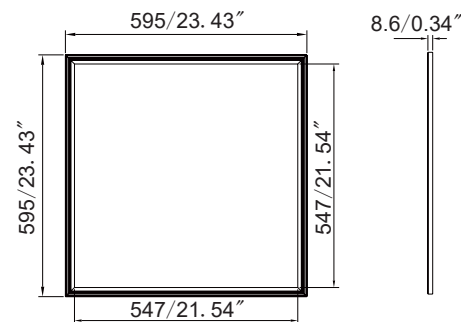
595x595mm

Technical Parameters

- Working voltage: 33-38V DC
- Max current: 900mA
- Output power: 36W (900mA)

Dimensions

(Units: mm/inch)



All dimension tolerance is ±0.5mm unless otherwise noted

Applications

- Hotels
- Conference/Meeting rooms
- Factories and offices
- Commercial purposes
- Residential / Institution buildings
- Schools, colleges, universities and hospitals
- Places that need energy saving and high color rendering index lighting.

Optional Accessories

See norlux.com for driver options and accessories.

EPN0024 Male

mounted on Panel

Dali version: Dali Male



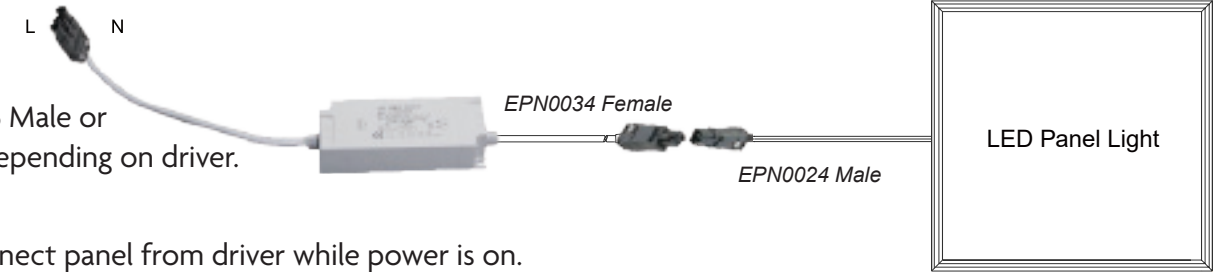
Warning

- Indoor use only
- Driver inlay voltages, not to be dismantled by non-professionals.
- Use in moist places is not allowed.
- Can't install on PPR.
- In order to avoid any case of danger, if there is any damage on the external soft cable, it needs to be replaced by qualified people from manufacturer or service agent or similar qualified units.

Electrical Connection

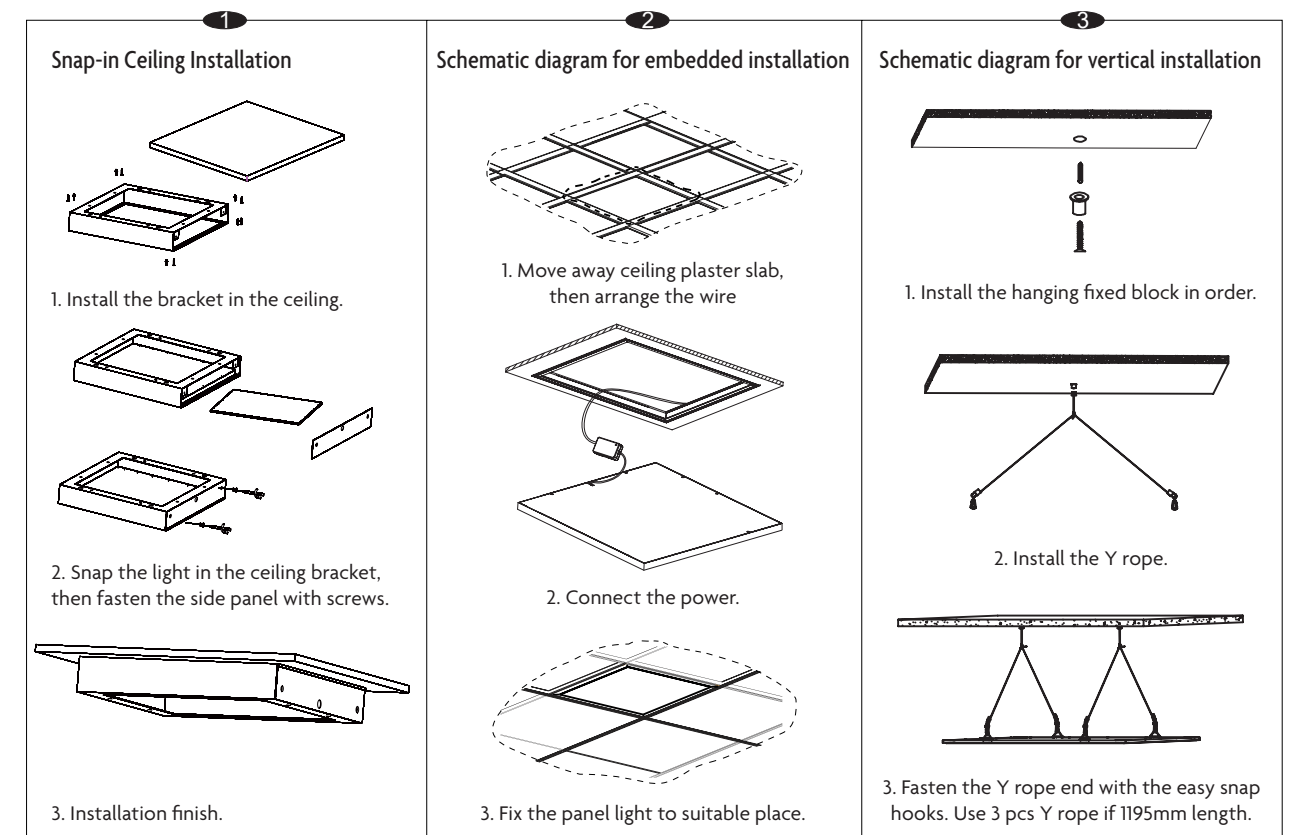
230V AC

Connection: 18i3 Male or 18i5 Dali Male, depending on driver.



⚠ Don't disconnect panel from driver while power is on.

Installation Instructions



Note

- Please read the specification first, to make sure the service environment matches the condition in the specification before using.
- Please confirm the applicable power supply before using.
- Make sure the switch of product is off before connect to the power supply to prevent electric shock.
- Operation against rules may damage your property even harm to your personal safety.
- Preliminarily estimate required quantity of LED panel lights, then according to the power rating of single panel light to figure out the total power and design power supply plan.
- Dangerous high voltage, Non-professionals are not allowed to maintain the products.
- If the exterior flexible cable or wire is damaged, it must exchange by the supplier, its agent or other similar qualified personnels to avoid dangers.