

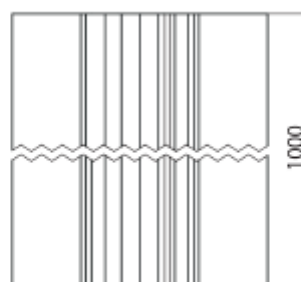
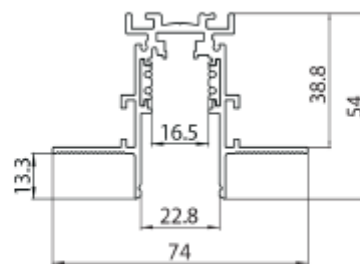
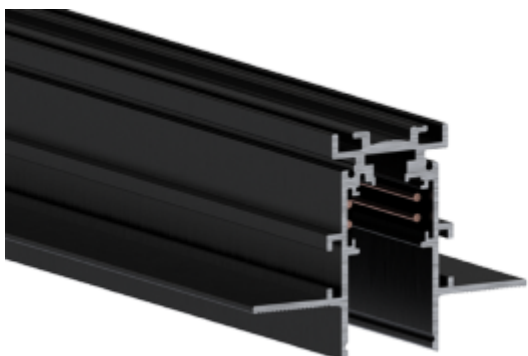


FDV SPEC SHEET

Track Evo 48V Recessed ST5 2m BK DALI

Art. no: 9500-ST5E-2-2

Ledpro
by NORLUX



Track Evo 48V Recessed ST5 2m BK DALI

IP20



CE

Art. no: 9500-ST5E-2-2

FDV

Produktbeskrivelse:

Sort 2m 48V EVO ST5 DALI lavvolts